

Test Report

No. : CR/2010/B0109A Date : 2010/11/29 Page : 1 of 10

CHANG CHUN PLASTICS CO., LTD.
(CHANG CHUN SB (CHANG SHU) CO., LTD.)
NO. 8, CHUNG HWA ROAD, HSINCHU INDUSTRIAL DISTRICT, TAIWAN
(CHANGCHUN RD., RIVERSIDE INDUSTRIAL PARK, CHANGSHU ECONOMIC DEVELOPMENT ZONE,
JIANGSU, CHINA)



The following sample(s) was/were submitted and identified by/on behalf of the client as:

Sample Description : EPOXY MOLDING COMPOUND
Style/Item No. : EME-E110G 、 EME-E120G 、 EME-E190 、 EME-E210 、 EME-E220 、 EME-E280 、
EME-E115 、 EME-E125 、 EG-100 、 EG-200 、 ER110 、 ER120 SERIES 。
Buyer/Order No. : TSU KONG CO., LTD.
Sample Receiving Date : 2010/11/10 AND 2010/11/24
Testing Period : 2010/11/10 TO 2010/11/16 AND 2010/11/24 TO 2010/11/29

=====
Test Result(s) : Please refer to next page(s).

* This report is combined with reports of CC/2010/B0053 and CR/2010/B0109 *



Chenyu Kung / Operation Manager
Signed for and on behalf of
SGS TAIWAN LTD.
Chemical Laboratory – Taipei

Unless otherwise stated the results shown in this test report refer only to the sample(s) tested. This test report cannot be reproduced, except in full, without prior written permission of the Company. 除非另有說明，此報告結果僅對測試的樣品負責。本報告未經本公司書面許可，不可部份複製。
This document is issued by the Company subject to its General Conditions of Service printed overleaf, available on request or accessible at www.sgs.com/terms_and_conditions.htm and, for electronic format documents, subject to Terms and Conditions for Electronic Documents at www.sgs.com/terms_e-document.htm. Attention is drawn to the limitation of liability, indemnification and jurisdiction issues defined therein. Any holder of this document is advised that information contained hereon reflects the Company's findings at the time of its intervention only and within the limits of Client's instructions, if any. The Company's sole responsibility is to its Client and this document does not exonerate parties to a transaction from exercising all their rights and obligations under the transaction documents. This document cannot be reproduced except in full, without prior written approval of the Company. Any unauthorized alteration, forgery or falsification of the content or appearance of this document is unlawful and offenders may be prosecuted to the fullest extent of the law.

Test Report

No. : CR/2010/B0109A Date : 2010/11/29 Page : 2 of 10

CHANG CHUN PLASTICS CO., LTD.
 (CHANG CHUN SB (CHANG SHU) CO., LTD.)
 NO. 8, CHUNG HWA ROAD, HSINCHU INDUSTRIAL DISTRICT, TAIWAN
 (CHANGCHUN RD., RIVERSIDE INDUSTRIAL PARK, CHANGSHU ECONOMIC DEVELOPMENT ZONE,
 JIANGSU, CHINA)



Test Result(s)

PART NAME No.1 : BLACK GRAIN (CC/2010/B0053)
 PART NAME No.2 : BLACK GRAIN (CR/2010/B0109)

Test Item (s):	Unit	Method	MDL	Result	
				No.1	No.2
Anthracene (CAS No.: 000120-12-7)	mg/kg	With reference to ZEK 01.2-08. Analyzed by GC/MS.	0.2	n.d.	---
4,4' - Diaminodiphenylmethane (CAS No.: 000101-77-9)	mg/kg	With reference to EN 14362-1: 2003. Analyzed by GC/MS.	3	n.d.	---
DBP (Dibutyl phthalate) (CAS No.: 000084-74-2)	%	With reference to EN 14372. Analyzed by GC/MS.	0.003	n.d.	---
BBP (Benzyl butyl phthalate) (CAS No.: 000085-68-7)	%	With reference to EN 14372. Analyzed by GC/MS.	0.003	n.d.	---
DEHP (Di- (2-ethylhexyl) phthalate) (CAS No.: 000117-81-7)	%	With reference to EN 14372. Analyzed by GC/MS.	0.003	n.d.	---
5-tert-butyl-2,4,6-trinitro- m-xylene (Musk Xylene) (CAS No.: 000081-15-2)	mg/kg	With reference to US EPA 3550C: 1996. Analyzed by GC/MS.	10	n.d.	---
Hexabromocyclododecane (HBCDD) and all major diastereoisomers identified (α - HBCDD, β - HBCDD, γ - HBCDD) (CAS No.: 025637-99-4 and 003194-55-6 (134237-51-7, 134237-50-6, 134237-52-8))	mg/kg	With reference to US EPA 3540C: 1996. Analyzed by GC/MS.	5	n.d.	---
Alkanes, C10-13, chloro (Short Chain Chlorinated Paraffins) (CAS No.: 085535-84-8)	mg/kg	With reference to US EPA 3540C: 1996. Analyzed by GC/MS.	100	n.d.	---
Tributyl Tin (TBT) (CAS No.: 000688-73-3)	mg/kg	With reference to ISO 17353: 2004. Analyzed by GC/FPD.	0.03	n.d.	---
Bis(tributyltin)oxide*** (CAS No.: 000056-35-9)	mg/kg	With reference to ISO 17353: 2004. Analyzed by GC/FPD.***	-	n.d.	---
Cobalt dichloride (CAS No.: 007646-79-9)	mg/kg	SGS In-House method-RSTS-EE-SVHC-003, RSTS-EE-SVHC-004. Analyzed by ICP-AES.	5	n.d.	---
Arsenic (As)	mg/kg	With reference to US EPA 3052: 1996. Analyzed by ICP-AES.	2	n.d.	---

Unless otherwise stated the results shown in this test report refer only to the sample(s) tested. This test report cannot be reproduced, except in full, without prior written permission of the Company. 除非另有說明，此報告結果僅對測試的樣品負責。本報告未經本公司書面許可，不可部份複製。

This document is issued by the Company subject to its General Conditions of Service printed overleaf, available on request or accessible at www.sgs.com/terms_and_conditions.htm and, for electronic format documents, subject to Terms and Conditions for Electronic Documents at www.sgs.com/terms_e-document.htm. Attention is drawn to the limitation of liability, indemnification and jurisdiction issues defined therein. Any holder of this document is advised that information contained hereon reflects the Company's findings at the time of its intervention only and within the limits of Client's instructions, if any. The Company's sole responsibility is to its Client and this document does not exonerate parties to a transaction from exercising all their rights and obligations under the transaction documents. This document cannot be reproduced except in full, without prior written approval of the Company. Any unauthorized alteration, forgery or falsification of the content or appearance of this document is unlawful and offenders may be prosecuted to the fullest extent of the law.

Test Report

No. : CR/2010/B0109A Date : 2010/11/29 Page : 3 of 10

CHANG CHUN PLASTICS CO., LTD.
 (CHANG CHUN SB (CHANG SHU) CO., LTD.)
 NO. 8, CHUNG HWA ROAD, HSINCHU INDUSTRIAL DISTRICT, TAIWAN
 (CHANGCHUN RD., RIVERSIDE INDUSTRIAL PARK, CHANGSHU ECONOMIC DEVELOPMENT ZONE,
 JIANGSU, CHINA)



Test Item (s):	Unit	Method	MDL	Result	
				No.1	No.2
Diarsenic pentaoxide*** (CAS No.: 001303-28-2)	mg/kg	With reference to US EPA 3052: 1996. Analyzed by ICP-AES.***	-	n.d.	---
Diarsenic trioxide*** (CAS No.: 001327-53-3)	mg/kg	With reference to US EPA 3052: 1996. Analyzed by ICP-AES.***	-	n.d.	---
Triethyl arsenate*** (CAS No.: 015606-95-8)	mg/kg	With reference to US EPA 3052: 1996. Analyzed by ICP-AES.***	-	n.d.	---
Lead (Pb)	mg/kg	With reference to US EPA 3052: 1996. Analyzed by ICP-AES.	2	n.d.	---
Lead hydrogen arsenate*** (CAS No.: 007784-40-9)	mg/kg	With reference to US EPA 3052: 1996. Analyzed by ICP-AES.***	-	n.d.	---
Hexavalent Chromium Cr(VI)	mg/kg	With reference to US EPA 3060A: 1996. Analyzed by UV-Vis.	2	n.d.	---
Sodium chromate*** (CAS No.: 007775-11-3)	mg/kg	SGS In-House method-RSTS-EE-SVHC- 003, RSTS-EE-SVHC-004. Analyzed by UV- VIS, ICP-AES.***	-	n.d.	---
Ammonium dichromate*** (CAS No.: 007789-09-5)	mg/kg	SGS In-House method-RSTS-EE-SVHC- 003, RSTS-EE-SVHC-004. Analyzed by UV- VIS, ICP-AES.***	-	n.d.	---
Potassium dichromate*** (CAS No.: 007778-50-9)	mg/kg	SGS In-House method-RSTS-EE-SVHC- 003, RSTS-EE-SVHC-004. Analyzed by UV- VIS, ICP-AES.***	-	n.d.	---
Potassium chromate*** (CAS No.: 007789-00-6)	mg/kg	SGS In-House method-RSTS-EE-SVHC- 003, RSTS-EE-SVHC-004. Analyzed by UV- VIS, ICP-AES.***	-	n.d.	---
Sodium dichromate*** (CAS No.: 010588-01-9(*))	mg/kg	With reference to US EPA 3060A: 1996. Analyzed by UV-Vis.***	-	n.d.	---
Anthracene oil (CAS No.: 090640- 80-5) (**)	mg/kg	With reference to ZEK 01.2-08. Analyzed by GC/MS.	500	n.d.	---
Anthracene oil, anthracene paste, distr. Lights (CAS No.: 091995-17-4) (**)	mg/kg	With reference to ZEK 01.2-08. Analyzed by GC/MS.	500	n.d.	---
Anthracene oil, anthracene paste, anthracene fraction (CAS No.: 091995-15-2) (**)	mg/kg	With reference to ZEK 01.2-08. Analyzed by GC/MS.	500	n.d.	---

Unless otherwise stated the results shown in this test report refer only to the sample(s) tested. This test report cannot be reproduced, except in full, without prior written permission of the Company. 除非另有說明，此報告結果僅對測試的樣品負責。本報告未經本公司書面許可，不可部份複製。

This document is issued by the Company subject to its General Conditions of Service printed overleaf, available on request or accessible at www.sgs.com/terms_and_conditions.htm and, for electronic format documents, subject to Terms and Conditions for Electronic Documents at www.sgs.com/terms_e-document.htm. Attention is drawn to the limitation of liability, indemnification and jurisdiction issues defined therein. Any holder of this document is advised that information contained hereon reflects the Company's findings at the time of its intervention only and within the limits of Client's instructions, if any. The Company's sole responsibility is to its Client and this document does not exonerate parties to a transaction from exercising all their rights and obligations under the transaction documents. This document cannot be reproduced except in full, without prior written approval of the Company. Any unauthorized alteration, forgery or falsification of the content or appearance of this document is unlawful and offenders may be prosecuted to the fullest extent of the law.

Test Report

No. : CR/2010/B0109A Date : 2010/11/29 Page : 4 of 10

CHANG CHUN PLASTICS CO., LTD.

(CHANG CHUN SB (CHANG SHU) CO., LTD.)

NO. 8, CHUNG HWA ROAD, HSINCHU INDUSTRIAL DISTRICT, TAIWAN

(CHANGCHUN RD., RIVERSIDE INDUSTRIAL PARK, CHANGSHU ECONOMIC DEVELOPMENT ZONE, JIANGSU, CHINA)



Test Item (s):	Unit	Method	MDL	Result	
				No.1	No.2
Anthracene oil, anthracene-low (CAS No.: 090640-82-7) (**)	mg/kg	With reference to ZEK 01.2-08. Analyzed by GC/MS.	500	n.d.	---
Anthracene oil, anthracene paste (CAS No.: 090640-81-6) (**)	mg/kg	With reference to ZEK 01.2-08. Analyzed by GC/MS.	500	n.d.	---
Pitch, coal tar, high-temp. (CAS No.: 065996-93-2) (**)	mg/kg	With reference to ZEK 01.2-08. Analyzed by GC/MS.	500	n.d.	---
Aluminosilicate, Refractory Ceramic Fibres	mg/kg	SGS In-House method-RSTS-EE-SVHC-003, RSTS-EE-SVHC-004. Analyzed by gravimetric method, ICP-AES.	500	n.d.	---
Zirconia Aluminosilicate, Refractory Ceramic Fibres	mg/kg	SGS In-House method-RSTS-EE-SVHC-003, RSTS-EE-SVHC-004. Analyzed by gravimetric method, ICP-AES.	500	n.d.	---
DIBP (Di-isobutyl phthalate) (CAS No.: 000084-69-5)	%	With reference to EN 14372. Analysis was performed by GC/MS.	0.003	n.d.	---
2,4-Dinitrotoluene (CAS No.: 000121-14-2)	mg/kg	With reference to US EPA 3550C method. Analysis was performed by GC/MS.	50	n.d.	---
Tris(2-chloroethyl) phosphate (TCEP) (CAS No.: 000115-96-8)	mg/kg	With reference to US EPA 3550C method. Analysis was performed by GC/MS.	50	n.d.	---
Lead chromate (CAS No.: 007758-97-6)	mg/kg	SGS In-House method-RSTS-EE-SVHC-003, RSTS-EE-SVHC-004. Analyzed by UV-VIS, ICP-AES.	100	n.d.	---
Lead chromate molybdate sulphate red (C.I. Pigment Red 104) (CAS No.: 012656-85-8)	mg/kg	SGS In-House method-RSTS-EE-SVHC-003, RSTS-EE-SVHC-004. Analyzed by UV-VIS, ICP-AES.	100	n.d.	---
Lead sulfochromate yellow (C.I. Pigment Yellow 34) (CAS No.: 001344-37-2)	mg/kg	SGS In-House method-RSTS-EE-SVHC-003, RSTS-EE-SVHC-004. Analyzed by UV-VIS, ICP-AES.	100	n.d.	---
Acrylamide (CAS No.: 000079-06-1)	mg/kg	With reference to US EPA 3550C method. Analysis was performed by LC/MS.	50	n.d.	---
Boron (B)	mg/kg	With reference to US EPA Method 3052 for Boron Content. Analysis was performed by ICP-AES.	2	---	114
Boric acid*** (CAS No.: 010043-35-3; 011113-50-1)	mg/kg	With reference to US EPA 3052:1996. Analyzed by ICP-AES.***	-	---	652

Unless otherwise stated the results shown in this test report refer only to the sample(s) tested. This test report cannot be reproduced, except in full, without prior written permission of the Company. 除非另有說明，此報告結果僅對測試的樣品負責。本報告未經本公司書面許可，不可部份複製。

This document is issued by the Company subject to its General Conditions of Service printed overleaf, available on request or accessible at www.sgs.com/terms_and_conditions.htm and, for electronic format documents, subject to Terms and Conditions for Electronic Documents at www.sgs.com/terms_e-document.htm. Attention is drawn to the limitation of liability, indemnification and jurisdiction issues defined therein. Any holder of this document is advised that information contained hereon reflects the Company's findings at the time of its intervention only and within the limits of Client's instructions, if any. The Company's sole responsibility is to its Client and this document does not exonerate parties to a transaction from exercising all their rights and obligations under the transaction documents. This document cannot be reproduced except in full, without prior written approval of the Company. Any unauthorized alteration, forgery or falsification of the content or appearance of this document is unlawful and offenders may be prosecuted to the fullest extent of the law.

Test Report

No. : CR/2010/B0109A Date : 2010/11/29 Page : 5 of 10

CHANG CHUN PLASTICS CO., LTD.
 (CHANG CHUN SB (CHANG SHU) CO., LTD.)
 NO. 8, CHUNG HWA ROAD, HSINCHU INDUSTRIAL DISTRICT, TAIWAN
 (CHANGCHUN RD., RIVERSIDE INDUSTRIAL PARK, CHANGSHU ECONOMIC DEVELOPMENT ZONE,
 JIANGSU, CHINA)



Test Item (s):	Unit	Method	MDL	Result	
				No.1	No.2
Disodium tetraborate, anhydrous*** (CAS No.: 001303-96-4, 001330-43-4, 012179-04-3)	mg/kg	With reference to US EPA 3052:1996. Analyzed by ICP-AES.***	-	---	530
Tetraboron disodium heptaoxide, hydrate (CAS No.: 012267-73-1) (Note 8)	mg/kg	With reference to US EPA 3052:1996. Analyzed by ICP-AES.	-	---	-
Trichloroethylene (CAS No.: 000079-01-6)	mg/kg	With reference to US EPA 5021 method. Analysis was performed by GC/MS.	1	n.d.	---
1,2,3-Trichlorobenzene (CAS No.: 000087-61-6)	mg/kg	With reference to US EPA 3550C method. Analysis was performed by GC/MS.	20	n.d.	---
1,2,4-Trichlorobenzene (CAS No.: 000120-82-1)	mg/kg	With reference to US EPA 3550C method. Analysis was performed by GC/MS.	20	n.d.	---
1,3,5-Trichlorobenzene (CAS No.: 000108-70-3)	mg/kg	With reference to US EPA 3550C method. Analysis was performed by GC/MS.	20	n.d.	---
Cobalt (Co)	mg/kg	With reference to US EPA 3052:1996. Analyzed by ICP-AES.	2	n.d.	---
Cobalt(II) sulphate*** (CAS No.: 010124-43-3)	mg/kg	With reference to US EPA 3052:1996. Analyzed by ICP-AES.***	-	n.d.	---
Cobalt(II) dinitrate*** (CAS No.: 010141-05-6)	mg/kg	With reference to US EPA 3052:1996. Analyzed by ICP-AES.***	-	n.d.	---
Cobalt(II) carbonate*** (CAS No.: 000513-79-1)	mg/kg	With reference to US EPA 3052:1996. Analyzed by ICP-AES.***	-	n.d.	---
Cobalt(II) diacetate*** (CAS No.: 000071-48-7)	mg/kg	With reference to US EPA 3052:1996. Analyzed by ICP-AES.***	-	n.d.	---
Ethylene glycol monomethyl ether (CAS No.: 000109-86-4)	mg/kg	With reference to US EPA 3550C method. Analysis was performed by GC/MS.	10	n.d.	---
Ethylene glycol monoethyl ether (CAS No.: 000110-80-5)	mg/kg	With reference to US EPA 3550C method. Analysis was performed by GC/MS.	10	n.d.	---
Chromium trioxide*** (CAS No.: 001333-82-0)	mg/kg	With reference to US EPA 3060A:1996. Analyzed by UV-Vis.***	-	n.d.	---
Acids generated from chromium trioxide and their oligomers: Chromic acid*** (CAS No.: 007738-94-5)	mg/kg	With reference to US EPA 3060A:1996. Analyzed by UV-Vis.***	-	n.d.	---

Unless otherwise stated the results shown in this test report refer only to the sample(s) tested. This test report cannot be reproduced, except in full, without prior written permission of the Company. 除非另有說明，此報告結果僅對測試的樣品負責。本報告未經本公司書面許可，不可部份複製。

This document is issued by the Company subject to its General Conditions of Service printed overleaf, available on request or accessible at www.sgs.com/terms_and_conditions.htm and, for electronic format documents, subject to Terms and Conditions for Electronic Documents at www.sgs.com/terms_e-document.htm. Attention is drawn to the limitation of liability, indemnification and jurisdiction issues defined therein. Any holder of this document is advised that information contained hereon reflects the Company's findings at the time of its intervention only and within the limits of Client's instructions, if any. The Company's sole responsibility is to its Client and this document does not exonerate parties to a transaction from exercising all their rights and obligations under the transaction documents. This document cannot be reproduced except in full, without prior written approval of the Company. Any unauthorized alteration, forgery or falsification of the content or appearance of this document is unlawful and offenders may be prosecuted to the fullest extent of the law.

Test Report

No. : CR/2010/B0109A Date : 2010/11/29 Page : 6 of 10

CHANG CHUN PLASTICS CO., LTD.
 (CHANG CHUN SB (CHANG SHU) CO., LTD.)
 NO. 8, CHUNG HWA ROAD, HSINCHU INDUSTRIAL DISTRICT, TAIWAN
 (CHANGCHUN RD., RIVERSIDE INDUSTRIAL PARK, CHANGSHU ECONOMIC DEVELOPMENT ZONE,
 JIANGSU, CHINA)



Test Item (s):	Unit	Method	MDL	Result	
				No.1	No.2
Acids generated from chromium trioxide and their oligomers: Dichromic acid*** (CAS No.: 013530-68-2)	mg/kg	With reference to US EPA 3060A:1996. Analyzed by UV-Vis.***	-	n.d.	---
Acids generated from chromium trioxide and their oligomers: Oligomers of chromic acid and dichromic acid (Note 9)	mg/kg	With reference to US EPA 3060A:1996. Analyzed by UV-Vis.	-	n.d.	---

Note :

1. mg/kg = ppm : 0.1wt% = 1000ppm
2. n.d. = Not Detected
3. MDL = Method Detection Limit
4. " - " = Not Regulated
5. ***: The substance was calculated by the test results of Tributyl Tin or element (Ex. Arsenic, Lead, Cr(VI), Boron or Cobalt respectively). The MDL is evaluated for Tributyl Tin or element (Ex. Arsenic, Lead, Cr(VI), Boron or Cobalt respectively).

Unless otherwise stated the results shown in this test report refer only to the sample(s) tested. This test report cannot be reproduced, except in full, without prior written permission of the Company. 除非另有說明，此報告結果僅對測試的樣品負責。本報告未經本公司書面許可，不可部份複製。

This document is issued by the Company subject to its General Conditions of Service printed overleaf, available on request or accessible at www.sgs.com/terms_and_conditions.htm and, for electronic format documents, subject to Terms and Conditions for Electronic Documents at www.sgs.com/terms_e-document.htm. Attention is drawn to the limitation of liability, indemnification and jurisdiction issues defined therein. Any holder of this document is advised that information contained hereon reflects the Company's findings at the time of its intervention only and within the limits of Client's instructions, if any. The Company's sole responsibility is to its Client and this document does not exonerate parties to a transaction from exercising all their rights and obligations under the transaction documents. This document cannot be reproduced except in full, without prior written approval of the Company. Any unauthorized alteration, forgery or falsification of the content or appearance of this document is unlawful and offenders may be prosecuted to the fullest extent of the law.

Test Report

No. : CR/2010/B0109A Date : 2010/11/29 Page : 7 of 10

CHANG CHUN PLASTICS CO., LTD.
 (CHANG CHUN SB (CHANG SHU) CO., LTD.)
 NO. 8, CHUNG HWA ROAD, HSINCHU INDUSTRIAL DISTRICT, TAIWAN
 (CHANGCHUN RD., RIVERSIDE INDUSTRIAL PARK, CHANGSHU ECONOMIC DEVELOPMENT ZONE,
 JIANGSU, CHINA)



$$AX = A \times F$$

AX	A	F
Diarsenic pentaoxide	Arsenic	1.5339
Diarsenic trioxide		1.3203
Triethyl arsenate		3.0179
Lead hydrogen arsenate		4.6332
	Lead	1.6753
Bis(tributyltin)oxide	Tributyl Tin (TBT)	1.0276
Sodium dichromate	Hexavalent Chromium Cr(VI)	2.5192
Sodium chromate		3.1151
Ammonium dichromate		2.4239
Potassium dichromate		2.8289
Potassium chromate		3.7347
Chromium trioxide		1.9231
Chromic acid		2.2696
Dichromic acid		2.0963
Boric acid		Boron (B)
Disodium tetraborate, anhydrous	4.6531	
Disodium tetraborate, pentahydrate	6.7361	
Disodium tetraborate, decahydrate	8.8191	
Cobalt(II) sulphate	Cobalt	2.63
Cobalt(II) dinitrate		3.1042
Cobalt(II) carbonate		2.0183
Cobalt(II) diacetate		3.0038

Regarding lead hydrogen arsenate lead and arsenic are tested and used for the calculation of the separated concentration of lead hydrogen arsenate. The final concentration of lead hydrogen arsenate for the report uses the minimum value of above-mentioned two concentration of lead hydrogen arsenate.

Unless otherwise stated the results shown in this test report refer only to the sample(s) tested. This test report cannot be reproduced, except in full, without prior written permission of the Company. 除非另有說明，此報告結果僅對測試的樣品負責。本報告未經本公司書面許可，不可部份複製。

This document is issued by the Company subject to its General Conditions of Service printed overleaf, available on request or accessible at www.sgs.com/terms_and_conditions.htm and, for electronic format documents, subject to Terms and Conditions for Electronic Documents at www.sgs.com/terms_e-document.htm. Attention is drawn to the limitation of liability, indemnification and jurisdiction issues defined therein. Any holder of this document is advised that information contained hereon reflects the Company's findings at the time of its intervention only and within the limits of Client's instructions, if any. The Company's sole responsibility is to its Client and this document does not exonerate parties to a transaction from exercising all their rights and obligations under the transaction documents. This document cannot be reproduced except in full, without prior written approval of the Company. Any unauthorized alteration, forgery or falsification of the content or appearance of this document is unlawful and offenders may be prosecuted to the fullest extent of the law.

Test Report

No. : CR/2010/B0109A Date : 2010/11/29 Page : 8 of 10

CHANG CHUN PLASTICS CO., LTD.
(CHANG CHUN SB (CHANG SHU) CO., LTD.)
NO. 8, CHUNG HWA ROAD, HSINCHU INDUSTRIAL DISTRICT, TAIWAN
(CHANGCHUN RD., RIVERSIDE INDUSTRIAL PARK, CHANGSHU ECONOMIC DEVELOPMENT ZONE,
JIANGSU, CHINA)



6. (*): conc. of Sodium dichromate dihydrate (CAS No.: 007789-12-0) = conc. of sodium dichromate \times 1.1374
7. (**): The concentrations of above-mentioned mixtures are evaluated per the gained composition rate between the selected marks and the mixtures.
8. Tetraboron disodium heptaoxide, hydrate: Only anhydrous form of disodium tetraborate is relevant and considered according to ECHA explanation (Ref no.: INC 000000032519).
9. Oligomers of chromic acid and dichromic acid : since the oligomers are made of the unknown amount of chromic acid or dichromic acid that results in no fixed molecular weight, therefore the monomer of chromic acid or dichromic acid is relevant and considered.
10. "---" = Not Conducted

Unless otherwise stated the results shown in this test report refer only to the sample(s) tested. This test report cannot be reproduced, except in full, without prior written permission of the Company. 除非另有說明，此報告結果僅對測試的樣品負責。本報告未經本公司書面許可，不可部份複製。

This document is issued by the Company subject to its General Conditions of Service printed overleaf, available on request or accessible at www.sgs.com/terms_and_conditions.htm and, for electronic format documents, subject to Terms and Conditions for Electronic Documents at www.sgs.com/terms_e-document.htm. Attention is drawn to the limitation of liability, indemnification and jurisdiction issues defined therein. Any holder of this document is advised that information contained hereon reflects the Company's findings at the time of its intervention only and within the limits of Client's instructions, if any. The Company's sole responsibility is to its Client and this document does not exonerate parties to a transaction from exercising all their rights and obligations under the transaction documents. This document cannot be reproduced except in full, without prior written approval of the Company. Any unauthorized alteration, forgery or falsification of the content or appearance of this document is unlawful and offenders may be prosecuted to the fullest extent of the law.

Test Report

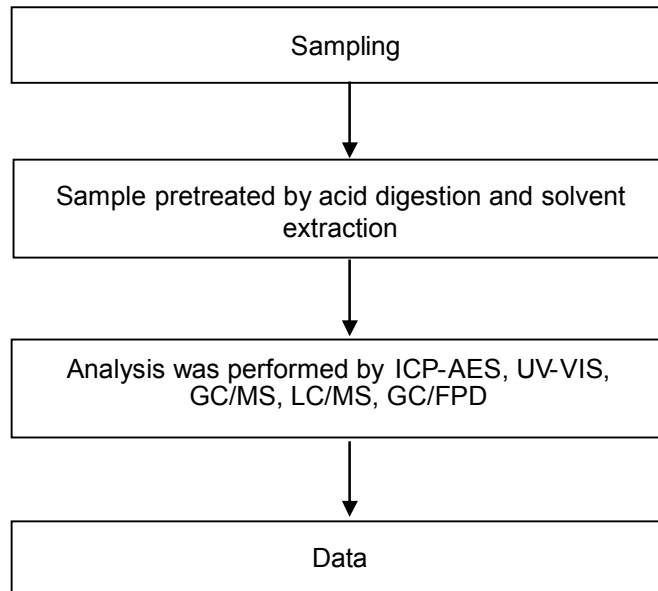
No. : CR/2010/B0109A Date : 2010/11/29 Page : 9 of 10



CHANG CHUN PLASTICS CO., LTD.
 (CHANG CHUN SB (CHANG SHU) CO., LTD.)
 NO. 8, CHUNG HWA ROAD, HSINCHU INDUSTRIAL DISTRICT, TAIWAN
 (CHANGCHUN RD., RIVERSIDE INDUSTRIAL PARK, CHANGSHU ECONOMIC DEVELOPMENT ZONE,
 JIANGSU, CHINA)

Analytical flow chart

- 1) Name of the person who made measurement: Roman Wong / Lydia Fu / Stacy Chou / Climbgreat Yang
- 2) Name of the person in charge of measurement: Chenyu Kung



Unless otherwise stated the results shown in this test report refer only to the sample(s) tested. This test report cannot be reproduced, except in full, without prior written permission of the Company. 除非另有說明，此報告結果僅對測試的樣品負責。本報告未經本公司書面許可，不可部份複製。
 This document is issued by the Company subject to its General Conditions of Service printed overleaf, available on request or accessible at www.sgs.com/terms_and_conditions.htm and, for electronic format documents, subject to Terms and Conditions for Electronic Documents at www.sgs.com/terms_e-document.htm. Attention is drawn to the limitation of liability, indemnification and jurisdiction issues defined therein. Any holder of this document is advised that information contained hereon reflects the Company's findings at the time of its intervention only and within the limits of Client's instructions, if any. The Company's sole responsibility is to its Client and this document does not exonerate parties to a transaction from exercising all their rights and obligations under the transaction documents. This document cannot be reproduced except in full, without prior written approval of the Company. Any unauthorized alteration, forgery or falsification of the content or appearance of this document is unlawful and offenders may be prosecuted to the fullest extent of the law.

Test Report

No. : CR/2010/B0109A Date : 2010/11/29 Page : 10 of 10



CHANG CHUN PLASTICS CO., LTD.
 (CHANG CHUN SB (CHANG SHU) CO., LTD.)
 NO. 8, CHUNG HWA ROAD, HSINCHU INDUSTRIAL DISTRICT, TAIWAN
 (CHANGCHUN RD., RIVERSIDE INDUSTRIAL PARK, CHANGSHU ECONOMIC DEVELOPMENT ZONE,
 JIANGSU, CHINA)

No.1



No.2



**** End of Report ****

Unless otherwise stated the results shown in this test report refer only to the sample(s) tested. This test report cannot be reproduced, except in full, without prior written permission of the Company. 除非另有說明，此報告結果僅對測試的樣品負責。本報告未經本公司書面許可，不可部份複製。

This document is issued by the Company subject to its General Conditions of Service printed overleaf, available on request or accessible at www.sgs.com/terms_and_conditions.htm and, for electronic format documents, subject to Terms and Conditions for Electronic Documents at www.sgs.com/terms_e-document.htm. Attention is drawn to the limitation of liability, indemnification and jurisdiction issues defined therein. Any holder of this document is advised that information contained hereon reflects the Company's findings at the time of its intervention only and within the limits of Client's instructions, if any. The Company's sole responsibility is to its Client and this document does not exonerate parties to a transaction from exercising all their rights and obligations under the transaction documents. This document cannot be reproduced except in full, without prior written approval of the Company. Any unauthorized alteration, forgery or falsification of the content or appearance of this document is unlawful and offenders may be prosecuted to the fullest extent of the law.